



atlascoliving.lt

ATLAS CO-LIVING



AN INNOVATIVE
NEW CO-LIVING
PROJECT: VILNIUS.

2024 January

Welcome to ATLAS





Co-living: a way of life



02

New to co-living? Introducing the movement.

We, humans, have been living together since...forever! But the concept of co-living is relatively new, so let us give you a quick run-down...



Co-living is an affordable, hassle-free, flexible, and easy way to live, travel, study, or work in a new city.



Residents can enjoy spacious, fully-furnished apartments for comfortable living. Also, they have access to many shared leisure facilities such as outdoor and indoor gym, yoga & meditation room, games rooms, etc.

In essence, it takes the stress out of relocation and puts residents in the heart of the action, quickly. And that's it. Simple.



2024
January



ATLAS: our concept

Welcome, people of the world.

ATLAS is a safe space for everyone to call home. Whether you're here for a few days, weeks, months, or years — we'd love to have you as part of our community for as little, or as long, as you need.

Our brand new and modern co-living space is situated in Lithuania's capital, Vilnius, serving those who need quick access to the city and its surrounding area.

Join a community that welcomes professionals, creatives, families, and students from around the world and enjoy a host of onsite facilities that are free to residents.

At ATLAS, you won't carry the weight of the world on your shoulders — remember, it's the planet that carries us all.

**Join our global community,
living life, local.**



03



2024
January



Location

04

WE ARE HERE!

B. Karvelio 14, Vilnius

~1 KM TO

Vilnius International Airport

~3 KM TO

Vilnius city center



2024
January



Benefits



Living at **ATLAS** offers residents the chance to meet people, socialize, study, work-out, and live with a stress-free lifestyle. Sounds good, right? Here's a comprehensive list...

Community

- Make new friends from around the world
- Collaborate on new projects
- Socialize with like-minded people
- Pets welcome – no leaving our furry friends behind!

Easy life admin

- Short or long term lets
- 5 x apartment categories to choose from
- Onsite parking
- CCTV across the site
- Fixed utility bills
- Free high-speed WI-FI



Benefits



Living at **ATLAS** offers residents the chance to meet people, socialize, study, work-out, and live with a stress-free lifestyle. Sounds good, right? Here's a comprehensive list...

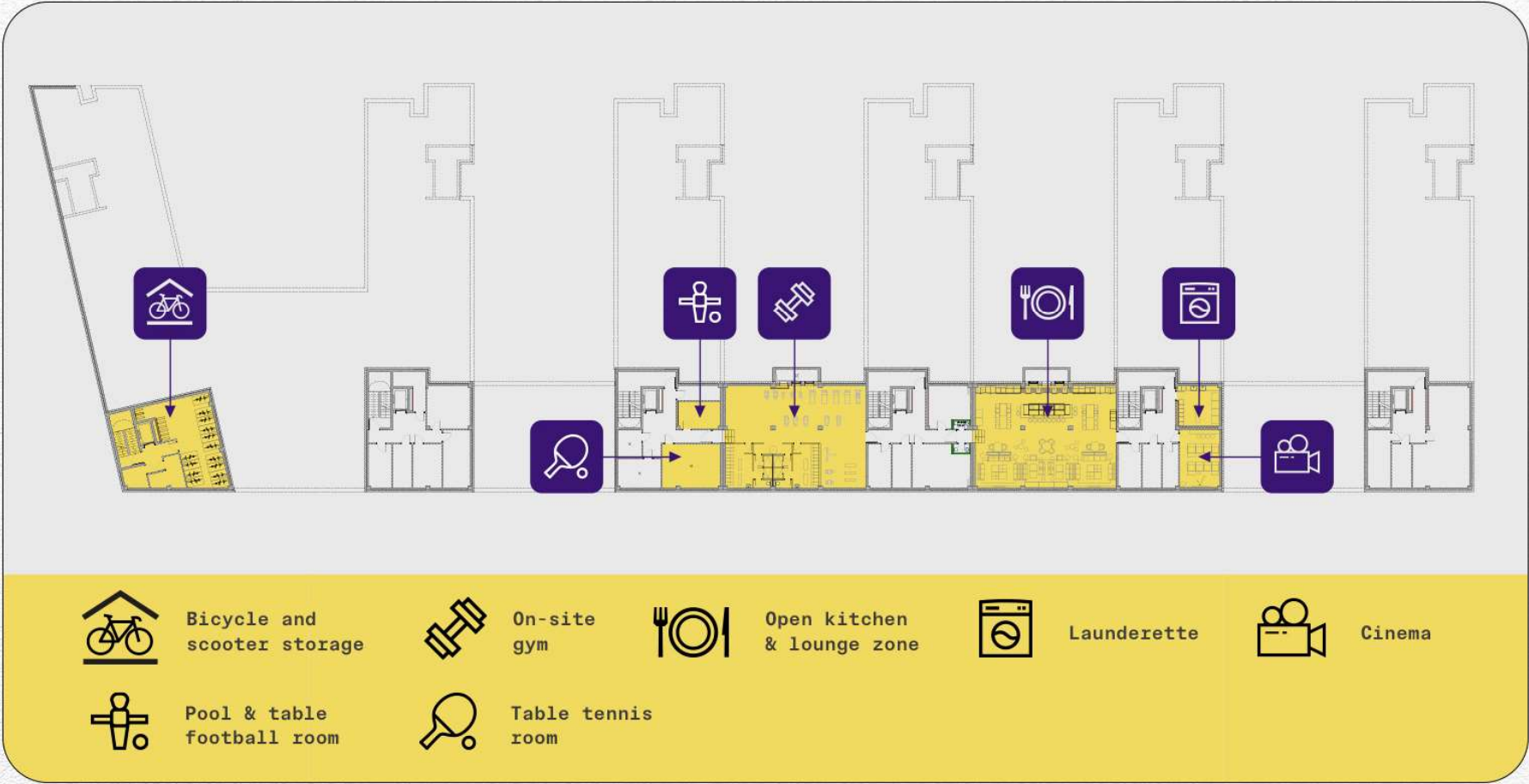
Leisure

- Indoor & outdoor gym
- Open kitchen / lounge zone
- Games rooms
- Pool & table football room
- Table tennis room
- Yoga & meditation room
- Study rooms
- Cinema
- Coffee zones
- Storage locker zone
- Launderette
- Nature park

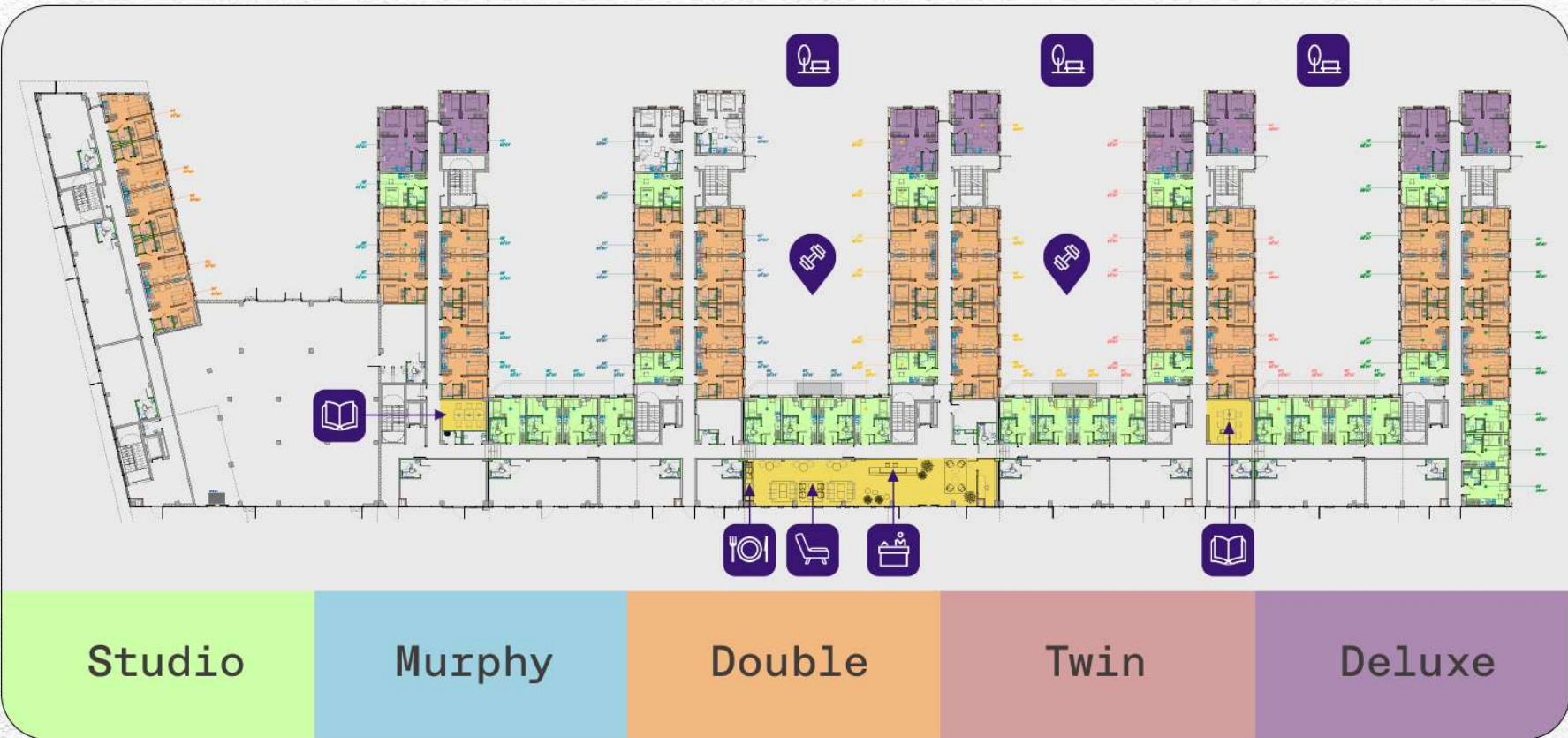


ATLAS: Level 0

atlascoliving.lt



ATLAS: Level 1

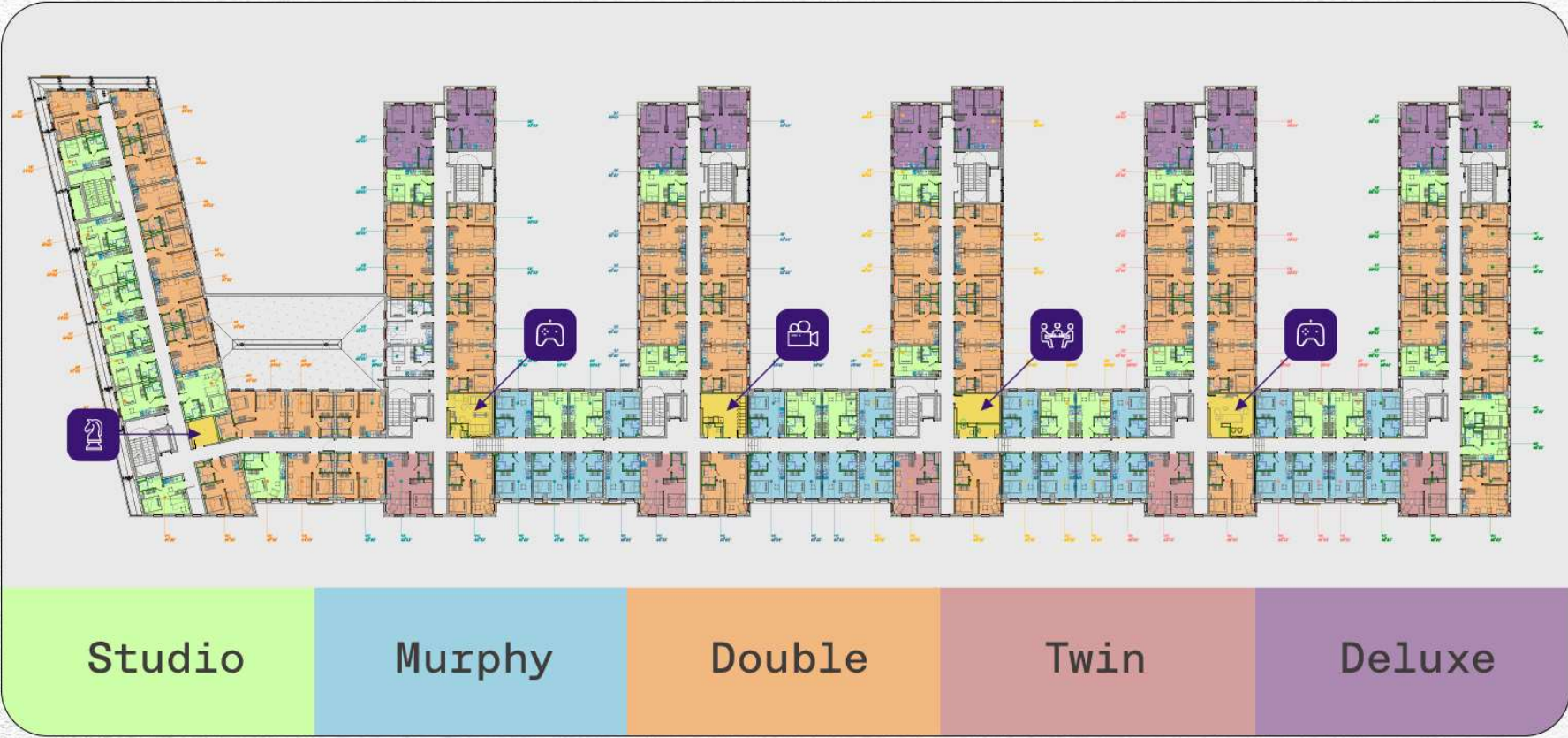


- Study room
- Mini kitchen & self-service shop
- Chill zone
- Reception
- Nature park
- Outdoor gym



ATLAS: Level 2

atlascoliving.lt



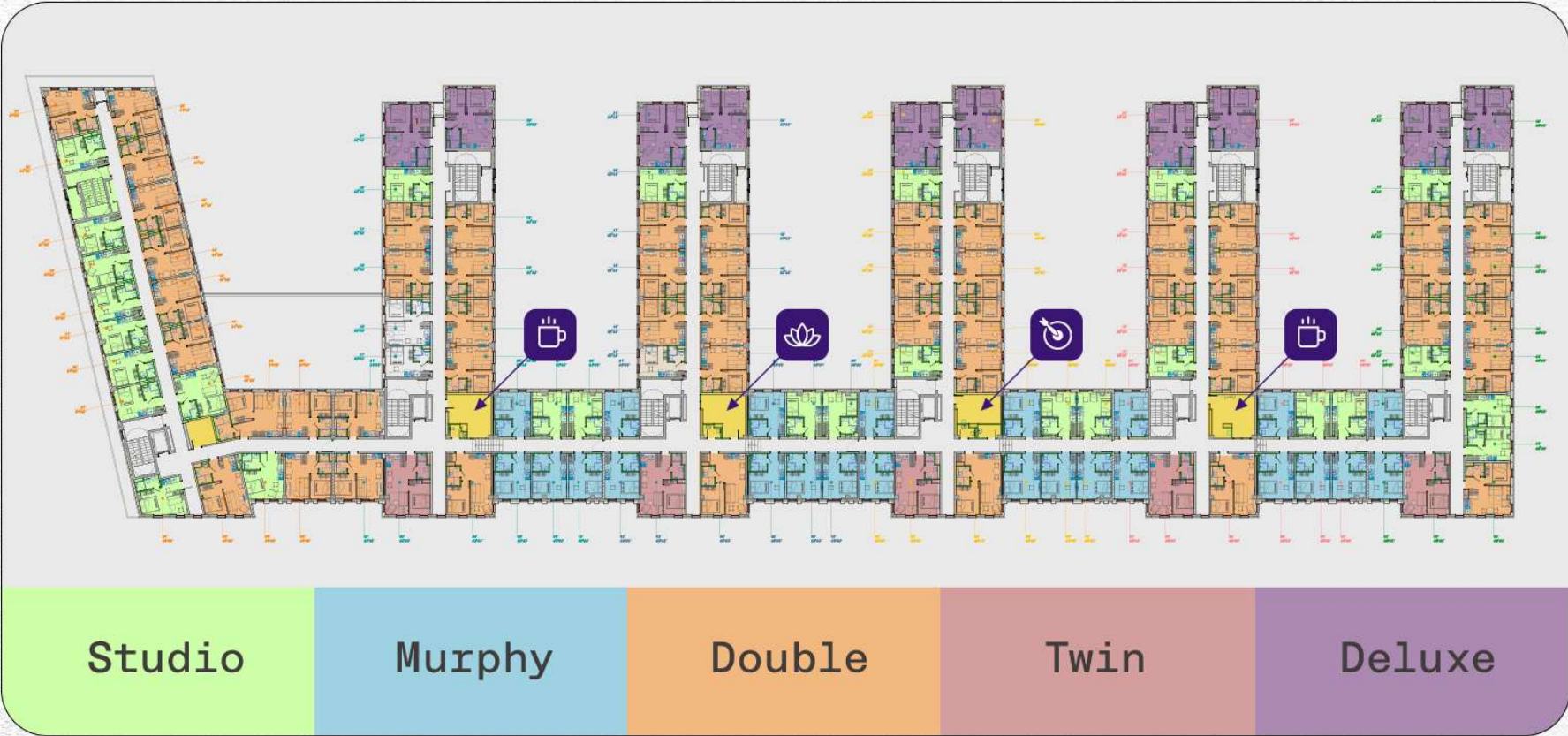
- Board games room
- Games room
- Cinema
- Meeting room
- Reception



ATLAS: Level 3

10

atlascoliving.lt



Coffee & chill zone

Yoga & meditation room

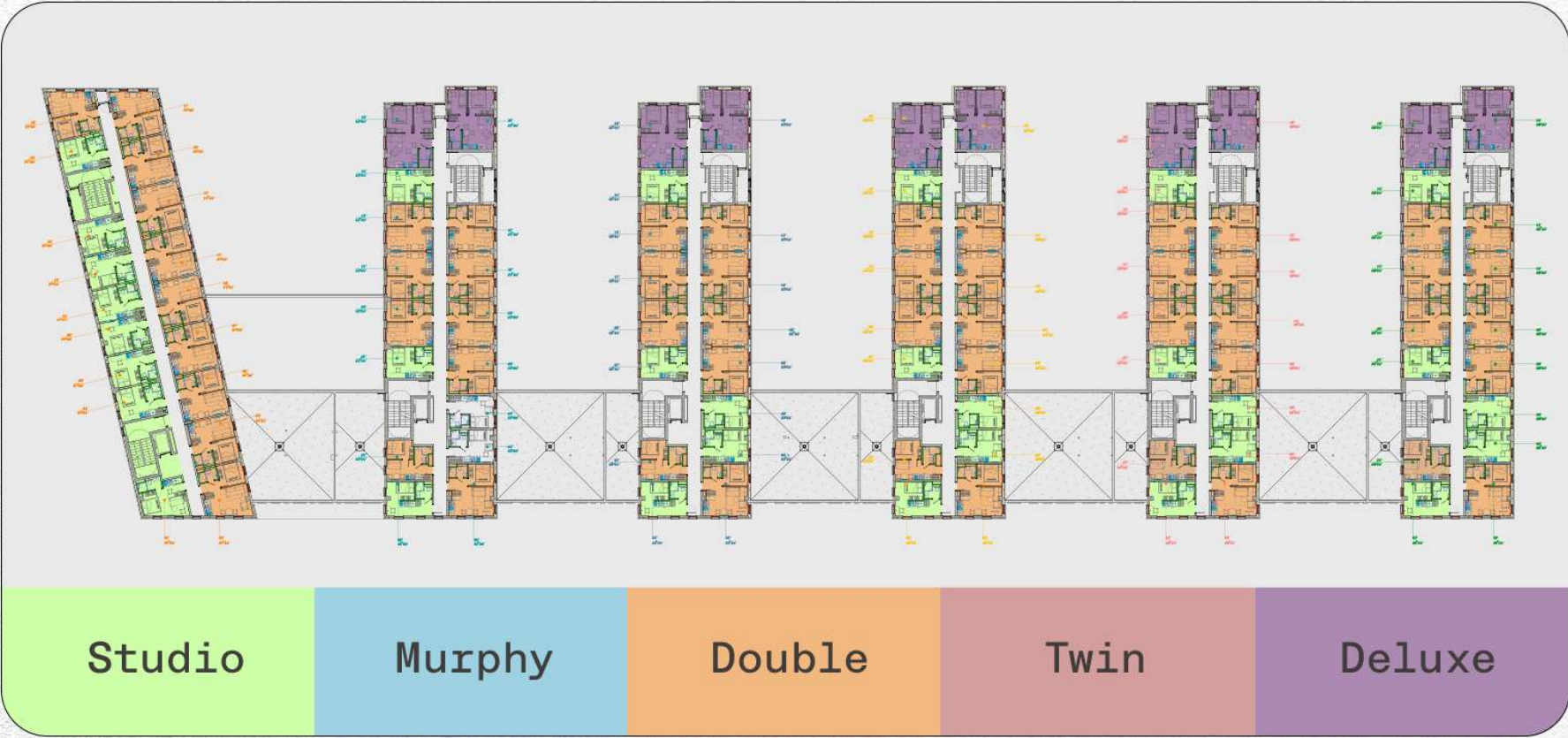
Meeting room

2024
January



ATLAS: Level 4

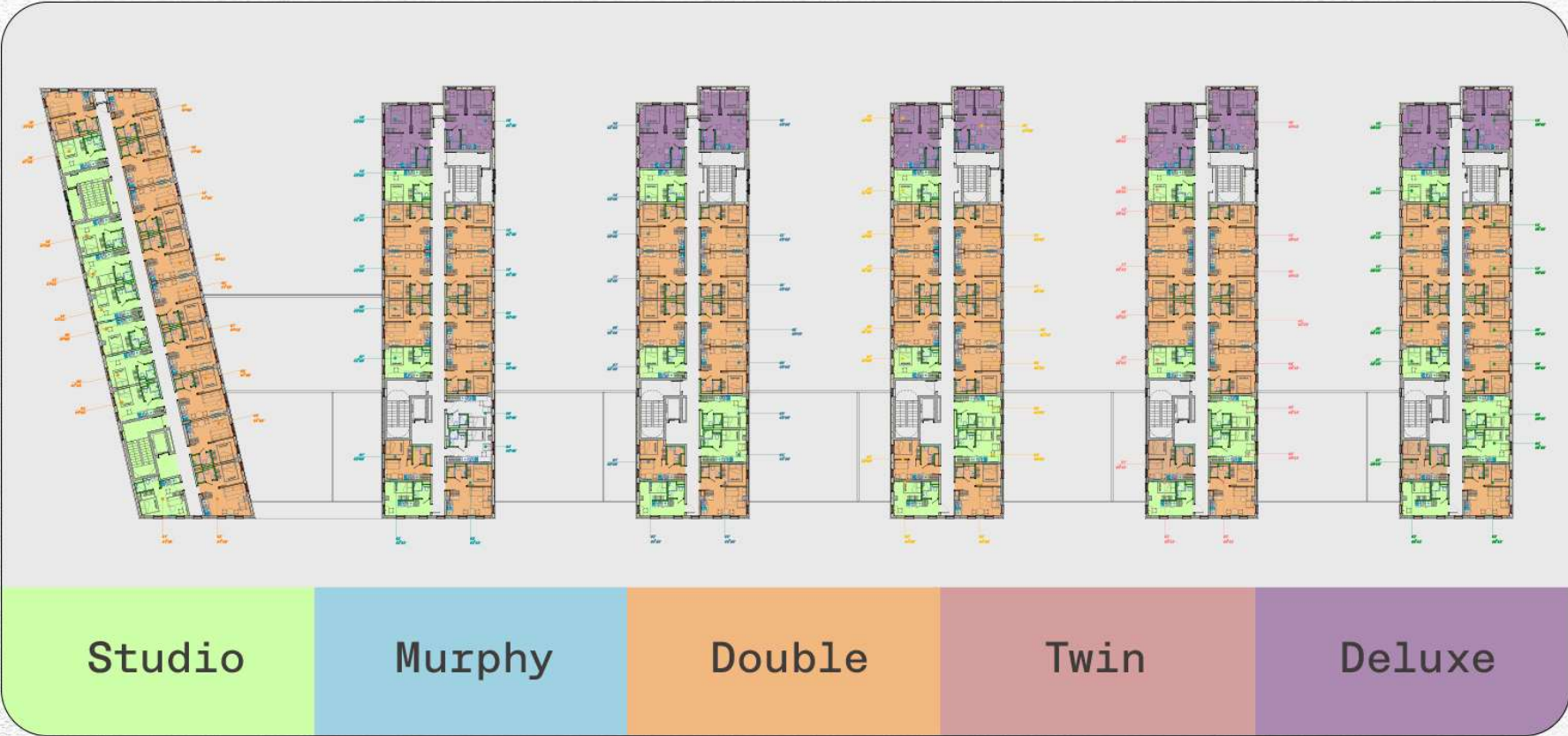
atlascoliving.lt





ATLAS: Level 5

atlascoliving.lt





Apartment types

13

STUDIO APARTMENT



17 - 20 m²



1 person

Studio apartments are the best choice for residents looking for their own individual space or one to share with a friend from the animal kingdom!

From **€360** per month

(+60 eur fixed utilities for one person / month)



2024
January



Apartment types

14

STUDIO APARTMENT



17 - 20 m²



1 person

Studio apartments are the best choice for residents looking for their own individual space or one to share with a friend from the animal kingdom!

From **€360** per month

(+60 eur fixed utilities for one person / month)



2024
January



Apartment types

15

MURPHY APARTMENT



17 - 20 m²



Up to 2 people

Murphy apartments are suitable for single occupancy or couples and offer a great combination between space, flexibility, and cost-effective living.

From **€375** per month

(+60 eur fixed utilities for one person / month)



2024
January



Apartment types

MURPHY APARTMENT

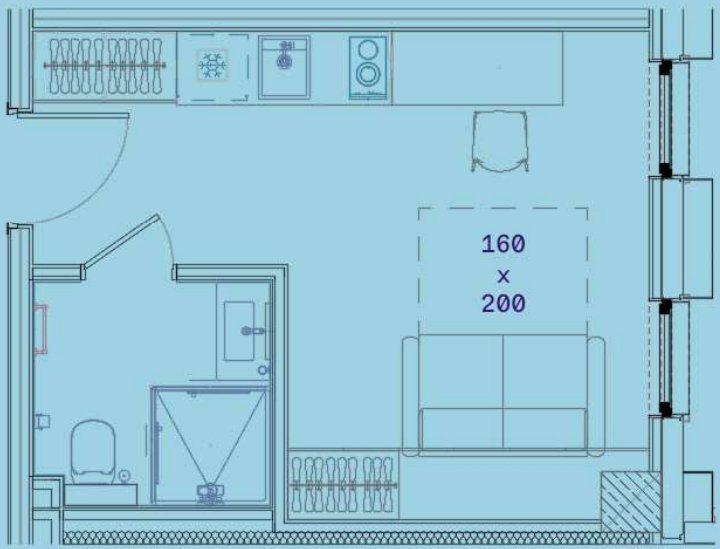
 17 - 20 m²

 Up to 2 people

Murphy apartments are suitable for single occupancy or couples and offer a great combination between space, flexibility, and cost-effective living.

From **€375** per month

(+60 eur fixed utilities for one person / month)





Apartment types

17

DOUBLE APARTMENT



24 - 25 m²



Up to 2 people

Whether you're flying solo, with your significant other, or with a friend, a two-room Double Apartment is tailor-made for those who appreciate a little extra personal space in their lives.

From **€430** per month

(+60 eur fixed utilities for one person / month)



2024
January



Apartment types

18

DOUBLE APARTMENT



24 - 25 m²

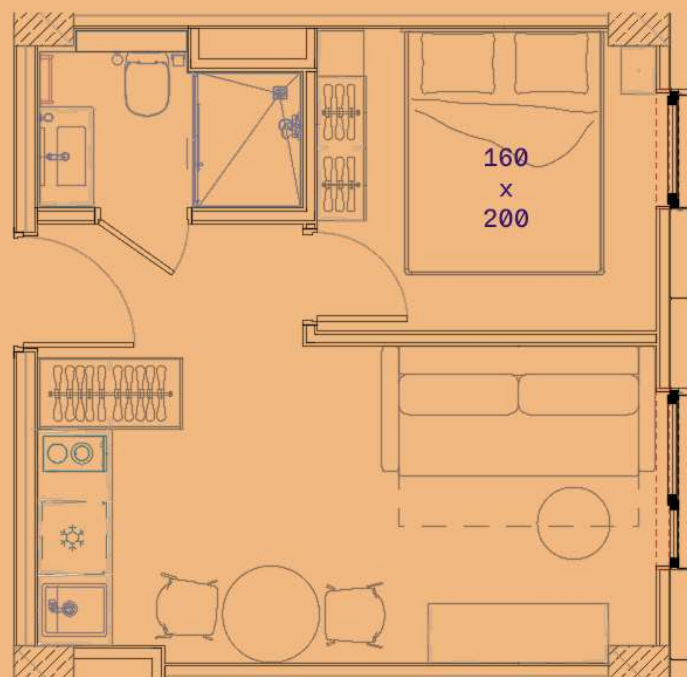


Up to 2 people

Whether you're flying solo, with your significant other, or with a friend, a two-room Double Apartment is tailor-made for those who appreciate a little extra personal space in their lives.

From **€430** per month

(+60 eur fixed utilities for one person / month)



2024
January

Apartment types

TWIN APARTMENT

 24 - 25 m²

 2 people

The Twin Apartment is ideal for friends or siblings, offering a two-room layout with a bedroom featuring two single beds for separate, comfortable sleeping arrangements.

From **€445** per month

(+120 eur fixed utilities for two people / month)





Apartment types

20

TWIN APARTMENT



24 - 25 m²

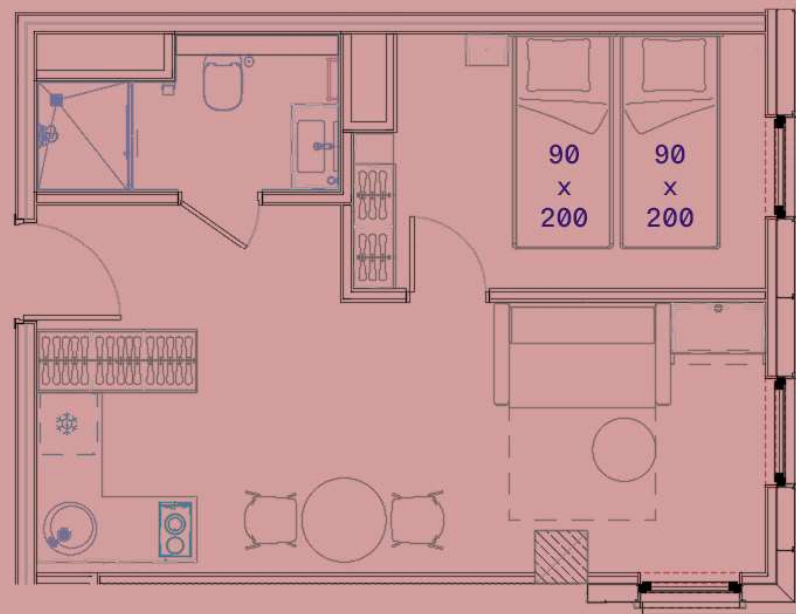


2 people

The Twin Apartment is ideal for friends or siblings, offering a two-room layout with a bedroom featuring two single beds for separate, comfortable sleeping arrangements.

From **€445** per month

(+120 eur fixed utilities for two people / month)



2024
January



Apartment types

21

DELUXE APARTMENT



33 - 35 m²



Up to 3 people

The Deluxe Apartment is a spacious three-room haven, featuring two separate bedrooms. It's perfect for families, couples, or friends cherishing extra space and comfort during their stay.

From **€600** per month

(+60 eur fixed utilities for one person / month)



2024
January



Apartment types

22

DELUXE APARTMENT



33 - 35 m²

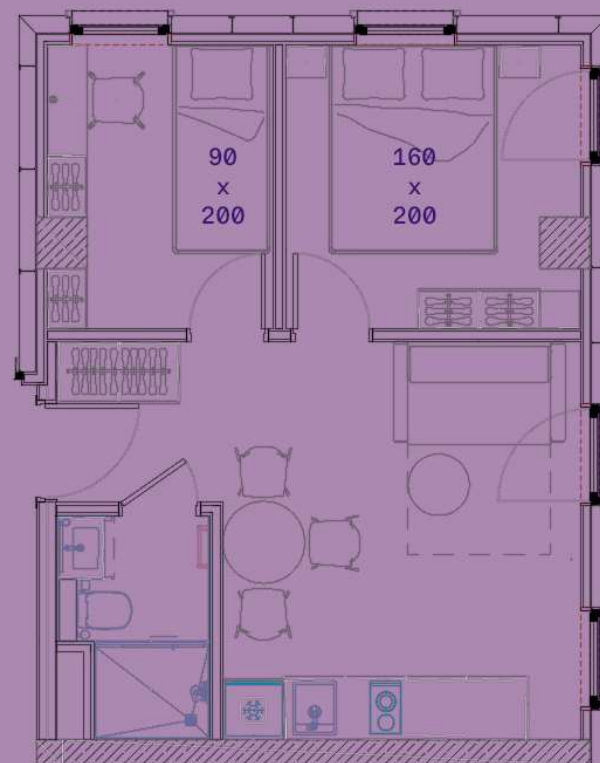


Up to 3 people

The Deluxe Apartment is a spacious three-room haven, featuring two separate bedrooms. It's perfect for families, couples, or friends cherishing extra space and comfort during their stay.

From **€600** per month

(+60 eur fixed utilities for one person / month)



2024
January



Short & long-term lets

Short-term accommodation (3-30 days)

Starts from 35€/night

If you're coming to Vilnius for work, travel, or a cheeky long weekend, our short-let options will be the perfect choice for residents to get in and out of the airport or city center. Be close to nature, enjoy our on-site facilities, and have the perfect location from which to explore the city.

Long-term accommodation (1 month+)

Starts from 360€/month

Looking to live in Vilnius on a more permanent basis? Perfect! We have a range of longer-term options to suit couples, roommates, and families. And if you're flying solo, we have just what you need to get started — but know that you won't ever feel alone within the ATLAS community.





Why ATLAS?



APARTMENTS

We offer spacious apartments in a variety of sizes (from 1 – 3 rooms). Also, we have several comfy apartments adapted for wheelchair access.



SHARED SPACES

Work out at our onsite sports facilities, get your cook on in the open kitchen, and enjoy a range of communal spaces including a cinema, games rooms, and yoga/meditation studio, etc.



FREE WI-FI & FIXED BILLS

Enjoy free high-speed internet access across the ATLAS site and make savings through fixed utility bills. Easy! We're a no-stress zone.



LOCATION

ATLAS is in a great location as we're close to Vilnius airport and the city centre. We're also right next to a small forest for those times when nature calls out to you!



MOBILITY

Public transport links provide quick & easy access to... everything! We're also in a CityBee car hire zone for 'super mobility mode'. Secure parking for own cars, bikes and scooters is also available.



SAFETY

Safety of our residents and their belongings is of paramount importance to us. That's why we have 24/7 onsite security, CCTV, and key cards for authorized access to our site.



COMMUNITY

At ATLAS, everyone is welcome! Couples, families, even your furry friends. We want our people to thrive in a diverse community!



PARTNERS

We have several onsite businesses that serve our residents for pure convenience! These include a café, beauty salon, massage & physio services and healthcare services.



A hassle-free relocation



Moving from another city, another country, or maybe another planet? No worries, we make moving simple. No crazy notice periods, criteria, or terms. Book & move!



If residents need to be flexible with their terms, they just let us know and we can work something out that...works!



Residents are welcome to bring their beloved furry companions, ensuring that their loyal friends stay by their side and feel right at home in the new city.





ATLAS

CO-LIVING



CONTACT

Call: +370 659 79777
Email: news@atlasliving.lt

www.atlasliving.lt



Join our global community...